

The Elders have been called to guide and lead the congregation in vision, mission and spiritual matters. Each elder is devoted to one dimension of the interdependent congregational life. If you have a congregational life concern, please get in touch with one of our elders.

Matt Baer, community
Mark Schildt, mission
Anna Groff, worship
Elisabeth Monsma, administration

The Deacons have been called to serve those who participate in our congregational life together, caring for the pastoral care needs that we share. If you have a need of any sort, interest in becoming a member, interest in joining a small group, or any other issues or concerns, please contact one of the deacons or pastor:

Char Schildt
Jerry Short
Duane Ediger

Mennonite Voluntary Service (MVS) Unit: Shalom maintains a strong MVS unit in Tucson, housing about 5 volunteers at a time. Our volunteers come from across the nation and the globe to work with the people of Tucson for service terms of 1-3 years. Our VSers are a central part of Shalom, and are active within wider Tucson communities. Please take the opportunity to get to know our VSers during their time in Tucson.

Interested in connecting more directly? Shalom uses several email lists to carry announcements and concerns during the course of the week. You can also receive the bulletin each week, as well as minutes for congregational business. See <http://shalommennonite.org/contact> to sign up.

The Sermon for most Sundays is available online as an mp3 file. See shalommennonite.org/worship/sermon for the latest sermons. The sermons are generally posted on Sunday afternoon, but may not be immediately available.

From Mennonite Mission Network News around the world:

Stephen Graber, former MVSer in Tucson, reflects on the Mennonite Healthcare Fellowship annual gathering in Estes Park, Colorado that he attended in June as an MVS representative: *The most rewarding part of the weekend were the sessions in which we were challenged to reflect upon how our faith as Mennonites influences how we practice health care. Throughout the weekend, we were challenged by multiple speakers to apply a special lens to the medical industry's definition of 'best practices' for health care.*

One speaker pointed us away from the 'medical factory' approach in which uniformity of care is the best practice, and toward the More-with-Less Cookbook approach (seriously). This approach acknowledges that there is not a single answer to the world's health-care (or food) problems; rather, we should joyfully search for solutions that grow from our living faith, acknowledging the unique person-hood and values of everyone who comes to us searching for assistance. The speaker struck a chord that really resonated with me when he posed the question, 'What do you have to offer patients that they couldn't get elsewhere?' The simple answer: a relationship. This has profound effects in patient care. We may not always be able to treat the disease, but the ability to build relationship, trust, and foster kindness and hope should always be at the front of our minds.

My time with MVS at St. Elizabeth's Health Center in Tucson has caused this message to resonate with me. Our patient/client populations come from diverse backgrounds and experiences. For some, the needs and circumstances can seem overwhelmingly complex. Rather than treat them as another item on the assembly line, it should be best practice for a person of faith to address each individual and their situation as unique, and to provide holistic care to the best of their capabilities. I have seen this type of faith-driven care at St. Elizabeth's, and it makes a difference.

To submit updates to the church directory, send an email to Joan Martin at jdk110850@gmail.com. Please use the word "directory" in the subject line.

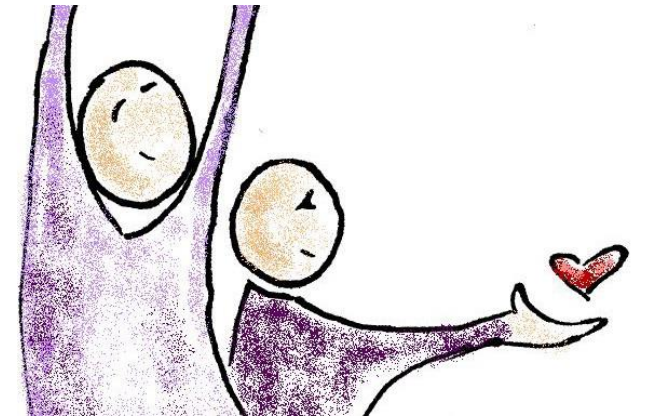
To contribute information to the bulletin, please send email to bulletin@shalommennonite.org by Thursday evening. A small team prepares the bulletin each week.

September 18th General Offering	\$2,246.00
Amount needed per Sunday per budget	\$2,221.00
General Offering Year to Date	\$22,558.64
Amount needed YTD per budget	\$26,652.00
Youth Fund	\$100.00
Total Youth Fund	\$7,351.00

SHALOM MENNONITE FELLOWSHIP

September 25, 2016

Love is of God



Co-pastors:

Carol Rose
carol@shalommennonite.org
312-933-8986

Tina Schlabach
tina@shalommennonite.org
574-903-9153

6044 E. 30th St.
Tucson, AZ 85711-6919
Email: info@shalommennonite.org
(520) 748-7082 (church)
www.shalommennonite.org

We are glad you are here!

Whether you are plain or fancy, confident or questioning, whole or in pieces; whatever your age, race, abilities, sexual orientation, gender, immigration status...; here every Sunday, for a season, or on sweet rare occasions, you are welcome as member, worshipper, participant, observer, leader...

¡Qué gozo nos trae su presencia!

Siendo humilde o sofisticad@, convencid@ o con dudas, fuerte o frágil; siendo lo que sean su edad, raza, habilidades, orientación sexual, género, condición migratoria...; bendiciendonos con su presencia cada domingo, por temporada, o de vez en cuando, Usted es bienvenid@ como miembro, devot@, participante, observador o líder ...

As we gather we celebrate our connection with our sister church, Teusaquillo, in Bogotá, Colombia.

Order of Worship

Gathering:

Prelude

God is our refuge (StJ 26)

Those who trust in the Lord (projected)

Candle lighting

Preparing ourselves

Prayer

Silence

Call to Worship

Joining in song:

Por la mañana (HWB 647)

God loves all His many people (HWB 397) – offering hymn

Hearing the Word:

Scripture: 1 John 4:7-12, 16b

Connecting: *How is love made known?*

Message: *In and out and in... the flow of love* - Tina

Response

Love is always following you (projected) – response song

Community life:

Report on MC USA sex abuse panel - Anna

Prayer of blessing

Introductions, announcements

Community sharing and prayer

Sending:

Peace before us (StS 16) – sending song

Benediction

Speaker: Tina

Worship leader: Elisabeth

Musicians: Erik, Jen, Matt, Lucas

Abbreviations:

HWB: *Hymnal A Worship Book* (Blue Book)

StJ: *Sing the Journey* (Green Book)

StS: *Sing the Story* (Purple Book)

Today's Schedule

9:30 a.m. – Worship (nursery staffed by Belén Siquieros)

11:00 a.m. – Sunday School for children and youth; Second Hour for adults

Calendar

Today – letter-writing orientation, 4 p.m. at Schlabachs' home

Sept. 26 – Worship commission meeting

Oct. 2 – Carol speaking at worship

Oct. 7-10 -- Border Convergence event (School of the Americas Watch)

Oct. 9 – Carol speaking at worship

Oct. 11 – Creation Care group

Oct. 16 – Tina speaking at worship

Oct. 23 – Adam Hostetter speaking at worship; “Fall harvest” potluck following second hour

Oct. 25 – Elders meeting

Oct. 30 – CROP Hunger Walk

Nov. 11-13 – church campout

Nov. 27 – International potluck

Dec. 24 – soup supper

Every Saturday 8:30 a.m. – 1:30 p.m. (summer hours through mid-October) – our facility is used by Church of God, a Worldwide Association

Announcements

Would you like to be paired for letter-writing with a person from another country who is being held at Eloy CCA Detention Center? Have you been writing, and need a fresh start? Not

necessary to know Spanish. Come for orientation to Tina's home, 3010 E. Loretta Drive, at 4:00 p.m. today. A personal letter means the end of isolation.

Second Hour:

Today - Elizabeth Smith, Coordinator of the Casa Mariposa Detention Visitation Group, sharing about companioning women and men in immigration detention. Shalom voted unanimously at the congregational meeting Aug. 25th to provide fiscal sponsorship for this visitation group.

Oct. 2 - Jen Metzler, sharing about her Fulbright summer learning trip to Oman and Zanzibar

Money webinar for Millennials Everence® encourages young adults to join Darryl Dahlheimer, Program Director for LSS Financial Counseling, for a live chat designed to help people think about how their faith affects their financial decisions. *Conquering your debt: the overlooked key to faith and finances* will be at 8 p.m. (EDT) Sept. 28. Visit <https://stewardshipresources.org/compass-live-chats> for more information or to register.

Creation care challenge: Is there a car trip this week that you could eliminate by combining tasks or biking? Next Shalom Creation Care Group meeting Tuesday, Oct. 11, at 6:30 at the VS house.

MennoTalks at Orlando 2017: Not quite TED, and not exactly Pecha Kucha, MennoTalks will explore a different topic each day, featuring seven speakers from diverse perspectives. We'll hear about celebrating women (the 100-year anniversary of Mennonite Women USA); race, religion and justice; and global and local peacemaking. The 20x20 presentation format — 20 slides for 20 seconds each — facilitates presentations that are dynamic, fast-paced and concise. If you would like to be considered for MennoTalks, complete the form on this webpage (convention.mennoniteusa.org/mennotalks/) and submit a 2–3 minute video (YouTube preferred) of your presentation by Oct. 1, 2016. Submissions without video will not be considered.

Shalom birthdays this week:

David Neufeld

September 27

Adele Baer

September 30

Leanne Yoder

October 1