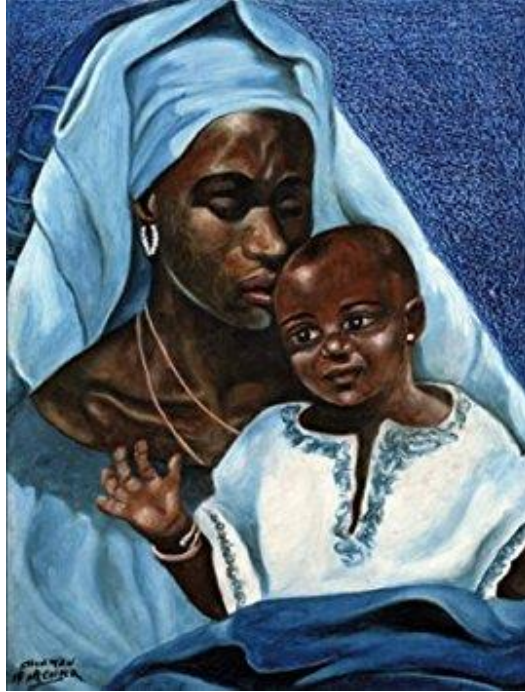


SHALOM MENNONITE FELLOWSHIP

Christmas 2016



African Mary and Jesus

Co-pastors:

Carol Rose
carol@shalommennonite.org
312-933-8986

Tina Schlabach
tina@shalommennonite.org
574-903-9153

6044 E. 30th St.

Tucson, AZ 85711-6919

Email: info@shalommennonite.org

(520) 748-7082 (church)

www.shalommennonite.org

We are glad you are here!

Whether you are plain or fancy, confident or questioning, whole or in pieces; whatever your age, race, abilities, sexual orientation, gender, immigration status...; here every Sunday, for a season, or on sweet rare occasions, you are welcome as member, worshipper, participant, observer, leader...

¡Qué gozo nos trae su presencia!

Siendo humilde o sofisticad@, convencid@ o con dudas, fuerte o frágil; siendo lo que sean su edad, raza, habilidades, orientación sexual, género, condición migratoria...; bendiciendonos con su presencia cada domingo, por temporada, o de vez en cuando, Usted es bienvenid@ como miembro, devot@, participante, observador o líder ...



Apache Madonna and Child

Calendar

Dec. 24 – Soup supper (5:30 pm), followed by worship (7 pm)

Dec. 25 – Carol speaking at worship; fellowship after worship; no Sunday School

Jan. 1 – Vic Stoltzfus speaking at worship; fellowship after worship; no Sunday School

Jan. 8 -- John Fife speaking at worship

Jan. 10 – Deacons meeting

Jan. 12 – Elders meeting

Mid-January to Mid-February – Congregation/Pastor Review

Every Saturday 9 am-2 pm – our facility is used by Church of God, a Worldwide Association

Announcements

January 8 through Feb. 5 in our worship at Shalom Mennonite Fellowship we will use lectionary scriptures with a focus on what it means to give and receive sanctuary. One year ago in January our congregation joined the sanctuary movement as a supporting congregation. Who knows how we may be called in the next months to put our commitment into action? In addition to extending sanctuary to vulnerable people in our community, we also will look at what it means to extend sanctuary to the earth in the Sonoran Desert, as well as what it means to receive sanctuary ourselves. How does God extend sanctuary to everyone, including us? How can we be part of more deeply living into the sanctuary that God provides, and of extending it to others and to the earth with fuller compassion?

During this series, we will be honored to have guests with us during Second Hours to present on different kinds of sanctuary work that are already happening in our wider community.

Tina is on vacation until Jan. 3. Carol is available for pastoral care during these two weeks.